



### FROM WATER TO WATTS

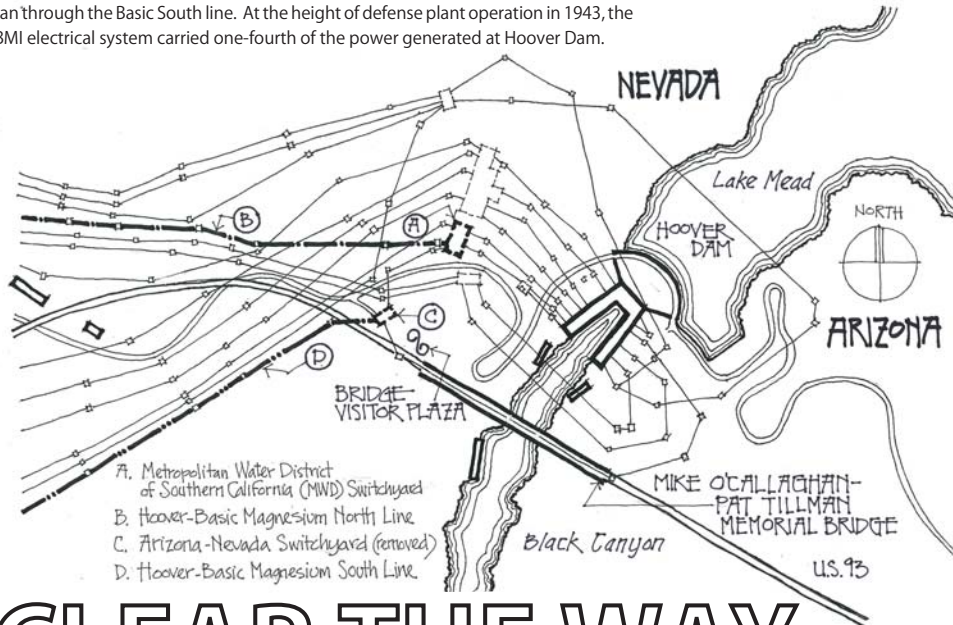
The nearby switchyards, towers and high-voltage power lines deliver electricity from Hoover Dam generators to Southwestern cities.

The Western Area Power Administration (WAPA) operates and maintains the Hoover-Basic Magnesium North and South transmission distribution system. They regulate flow and direct hydroelectric energy to the power lines through switchyards near the dam.

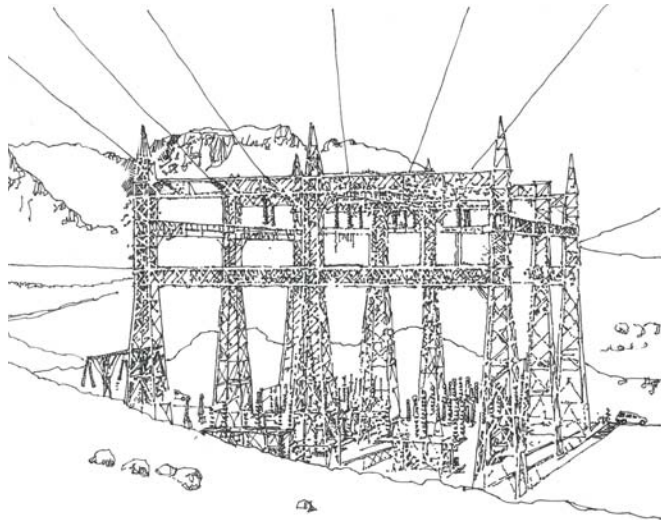
### DAM POWER HELPS WIN THE WAR

Hoover Dam served a vital role during World War II by providing massive amounts of electricity to the defense plant south of Las Vegas.

Two "sister" switchyards near the Nevada edge of Black Canyon were the starting points for the power lines serving the Basic Magnesium, Inc. (BMI) complex. On 30 August 1942, for the first time, power from the southern Arizona-Nevada Switchyard ran through the Basic South line. At the height of defense plant operation in 1943, the BMI electrical system carried one-fourth of the power generated at Hoover Dam.



# CLEAR THE WAY of Switchyard & Towers



### POWER TO THE PEOPLE

After the war, the power lines were connected to the Nevada Power Company network to support continuing industrial production and the rapid growth of the Las Vegas Valley.

The BMI plant stopped making incendiary bombs and anti-tank weapons by mid-1944. The Basic North and South lines continued to provide electricity for the remaining industrial functions at the complex and for Las Vegas, Henderson and Boulder City.

### SWITCHYARD SWITCH OVER

To build the Hoover Dam Bypass, WAPA removed the Arizona-Nevada Switchyard and rerouted its lines through the "sister" switchyard.

The Bridge Visitor Plaza parking area was once the Arizona-Nevada Switchyard. Two of its original nine towers still stand there. Its northern sister switchyard, called the Metropolitan Water District of Southern California (MWD) Switchyard, continues to support the transmission lines.